



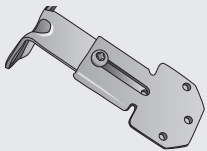
## You should have...

First check you've got all the fittings that come with your Panel blind.

Brackets: 1 per 50cm



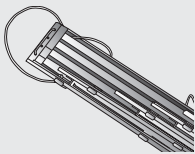
UEB brackets (when requested) 1 per every 50cm



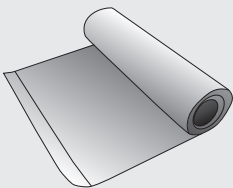
UEB additional screw



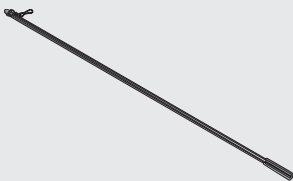
Assembled headrail



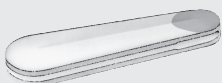
Fabric panels



Either wand - silver



or cord weight - white



Bottom bar weights - 1 per fabric panel



## Fitting your Panel blind

### Before you start, check you have your brackets

Your blind brackets are packed separately. The top fix brackets are in the headrail box and the face fix brackets are in the panel box. Check you've taken them out before you throw the packaging away.

You can fit your Web-Blinds Panel blind in 3 straightforward stages. Just do these in order and you'll soon have your new blind up.

1. Fit the headrail
2. Fit the cord weight or wand
3. Hang the panels

## Stage 1: Fit the headrail

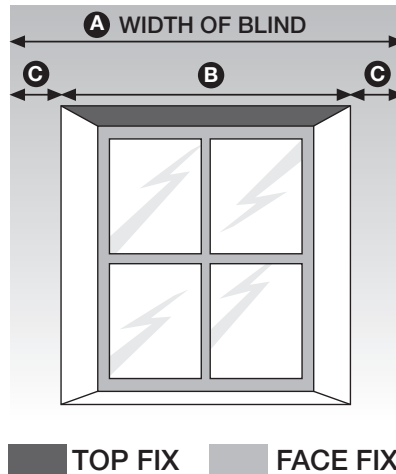
### 1 Fitting your blind outside the window (exact fitting)

To make sure the centre of the rail is precisely in the middle of your window, the measurements at either end (**C**) need to be the same. To work out **C**:

- measure the width of the window (measurement **B**). Write down the measurement.
- measure the width of the blind (measurement **A**). Write down the measurement.

Take measurement **B** away from measurement **A** and divide the answer by 2 to get measurement **C**.

Now follow the instructions for **face fixing**.



### Fitting your blind inside the window (recess fitting)

You need to decide whether to **face fix** or **top fix** your blind.

**Top fix** your blind to the lintel if:

- you have uPVC window frames, or
- there are obstructions like handles

**Face fix** your blind if:

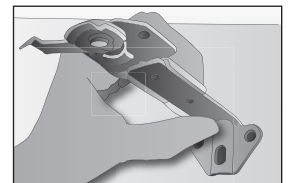
- you want to fit the bracket to the window frame

### 2 Top fixing

Attach the brackets to the ceiling or lintel, Start at approximately 7cm from each end of the rail and approximately every 50cm in between.

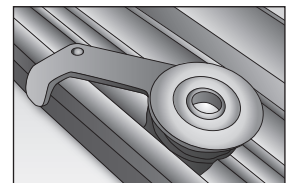
#### Face fixing

Attach the brackets to either your wall or window frame. Starting approximately 7cm from each end of the rail and approximately every 50cm in between, attach the UEB bracket to the swivel bracket using the additional screw provided.

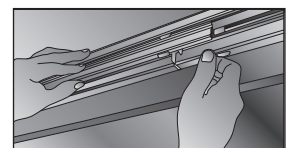


### 3 Make sure the lip of the headrail is at the front.

Clip the headrail into the swivel bracket and close the lock. Bear in mind if you have a wide headrail you may need two people to do this.

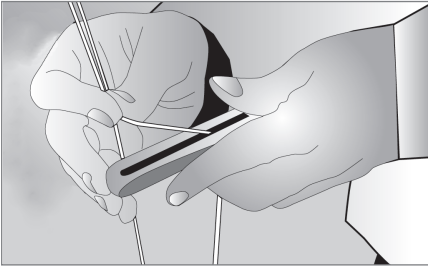


### 4 Pull the carriers across so they're spread across the width of the headrail. Carriers are pre set with a 5cm overlap. Depending on the width of your blind the back carrier may have a greater overlap.

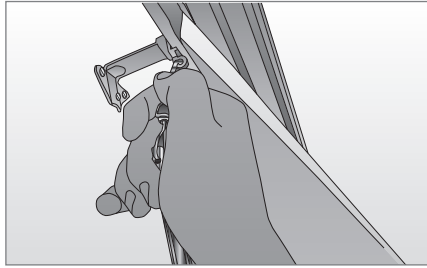


## Stage 2: Fit the cord weight or wand

**1** For cords... hang the cord weight onto the cord.

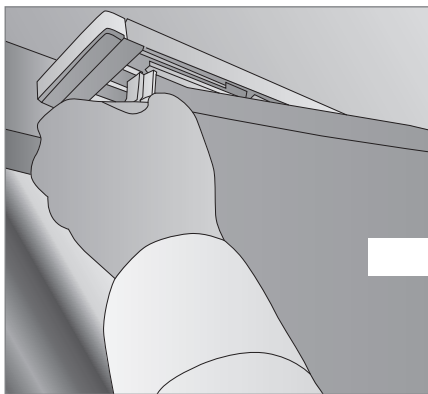


**2** For wands... fix the wand onto the wand carrier which is located behind the first/front panel carrier. Split blinds will have 2 wands.

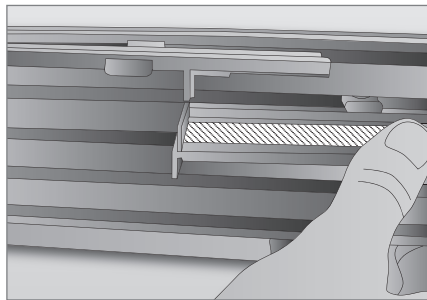


## Stage 3: Hang the panels

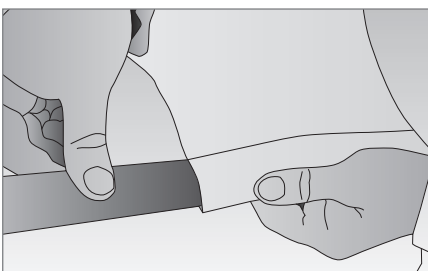
**1** Lay all of the fabric panels out flat to prevent them from creasing, and attach the first fabric panel to the panel carrier with Velcro starting from the first or lead panel.



**2** To attach the fabric panels to the next carrier, separate the carriers by using one finger to gently push the back carrier away from you, while pulling the next carrier towards you, giving you enough space to get the fabric on. When complete attach the carriers to one another.



**3** Slide the bottom bar weights into the pocket at the bottom of each fabric panel.



## **Operating your blind**

**Operating your blind is easy. Just follow these instructions.**

- The cord or wand opens and closes the blind.
- The cord weight hangs on the cord to act as a stabiliser to keep the cord in place whilst operating.
- The fabric panel is attached with Velcro to the panel carrier.

## **Be safe**

- Keep all cords and chains out of children's reach.
- Install safety devices such as cleats and cord tidies to keep cords away from children. You can request a free safety device when you make your Web-Blinds order. If you've already got your Web-Blinds blind, you can still get a free safety device. Just call us on **0845 604 9611** 8.30am - 6pm, Monday to Friday and 9am -1pm.
- Move cots, beds and other furniture away from blinds

**Need help fitting your blind? Call 0845 604 9611  
8.30am - 6pm, Monday to Friday and 9am -1pm Saturday**