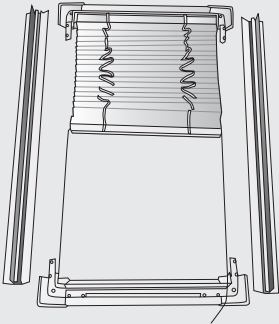




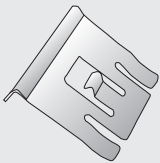
You should have...

First check you've got all the fittings that come with your **Perfect Fit** blind.

Perfect Fit frame and blind



Brackets: amount to suit size of blind



Fitting your **Perfect Fit** blind

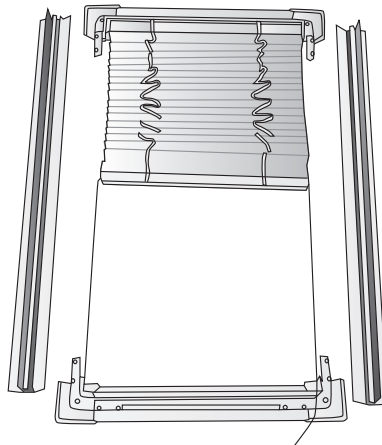
First check you've got all the fittings that come with your **Perfect Fit** frame and blind.

You can fit your Web-Blinds **Perfect Fit** frame and blind in 3 straightforward stages. Just do these in order and you'll soon have your frame and blind up.

1. Put the frame together
2. Attach the brackets
3. Attach the frame and blind to the window

Stage 1: Put the frame together

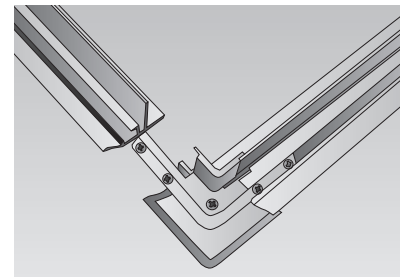
1 Lay all parts of the frame/blind out, face down, on a clean even surface, unravelling all side guide cords and control cords. These will be wrapped around your blind on receipt. Your Pleated blind will have the top and bottom parts of the frame attached by side guide cords. Your Venetian blind is only attached to the top section of the frame.



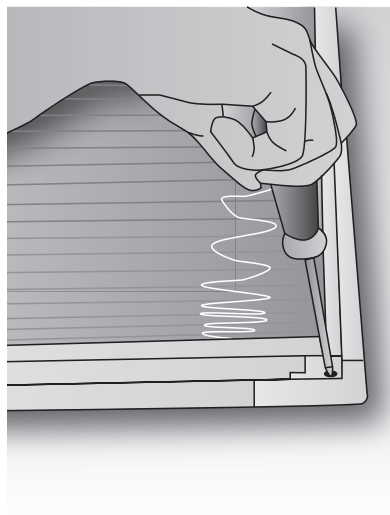
2 **For your Pleated blind** Connect the left-hand side of the frame to the exposed arm on the bottom left-hand corner joint until it feels secure. Repeat the process on the top left-hand corner joint.

Follow the same procedure for the right-hand side of the frame.

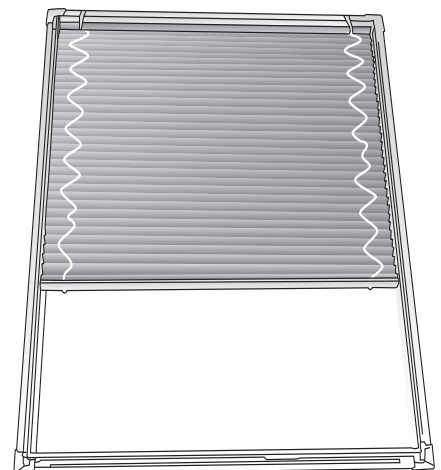
For your Venetian blind First connect the left-hand side of the frame to the top of the frame, then connect this to the bottom section of the frame. Repeat the process for the right-hand side of the frame.



3 Once the frame is complete, tighten the screws on each corner.



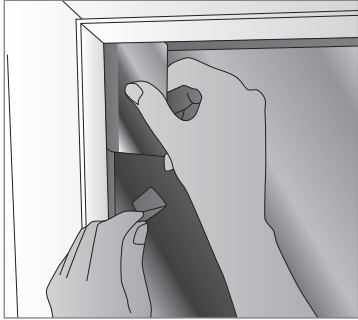
4 Your **Perfect Fit** frame and blind is ready to fit.



Stage 2: Attach the brackets

1

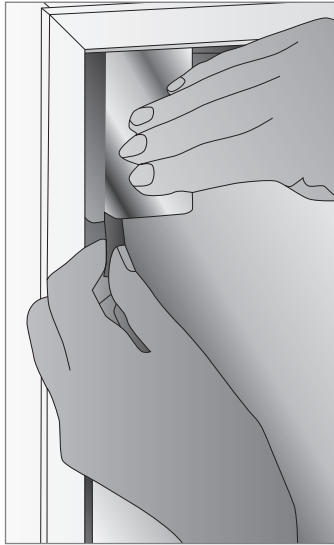
You need to push the window fixing brackets between your window and the rubber seal (the bit between your window frame and the glass panel).



2

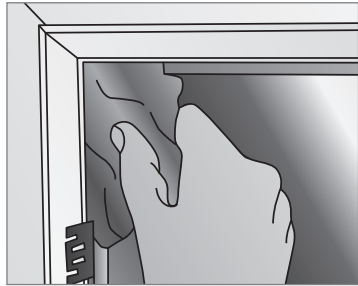
To line the brackets up perfectly in your window frame, a credit or debit card is useful here. Place it lengthways in the corners of your window and placing the bracket at the base of the card for top corners and the top of the card for bottom corners.

Fit any intermediate brackets accordingly. Two extra brackets will be supplied for blinds over 120cm drop, these are positioned approx mid way down the drop of the blind one on each side. These need to be lined up with the bracket hole positions on the **Perfect Fit** frame.



3

If your brackets need a bit of lubricant to slot in easily, use washing up liquid. Once all the brackets are fitted, clean any excess washing up liquid from the window surface.



Stage 3: Attach the frame and blind to the window

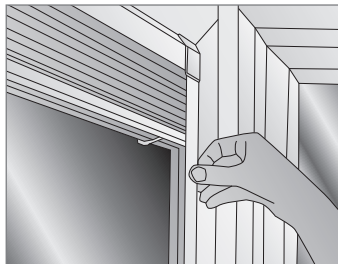
1

Line up the holes in the **Perfect Fit** frame with the brackets.



2

Firmly press the frame onto each bracket one side at a time.



3

Your frame and blind are now installed.



Operating your blind

Operating your blind is easy. Just follow these instructions.

Perfect Fit Pleated blind

- Simply raise and lower the blind to the desired position by firmly holding the thumb tab.
- We recommend opening and closing your blind regularly to maintain defined pleats in the fabric.

Perfect Fit Venetian blind

- To raise and lower your blind, use the cord. Pull it across the front of the blind to release the cord lock and let the cord slide through your fingers.
- To adjust the angle of the slats, twist the wand.
- Slats need to be open when raising or lowering the blind.

Be safe

- Keep all cords and chains out of children's reach.
- Move cots, beds and other furniture away from blinds

Need help fitting your blind? Call 0845 604 9611
8.30am - 6pm, Monday to Friday and 9am -1pm Saturday