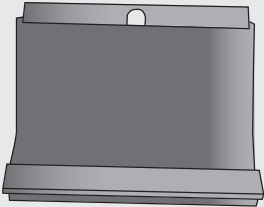




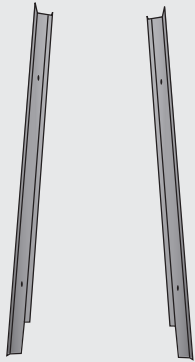
You should have...

First check you've got all the fittings that come with your Skylight Roller blind

Blind cassette: 1



Side channels: 2



Wood screws: min 4

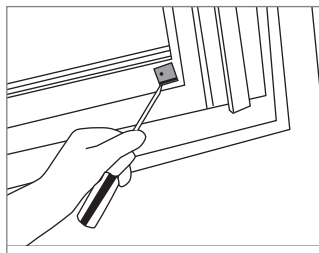


Fitting your Skylight Roller blind

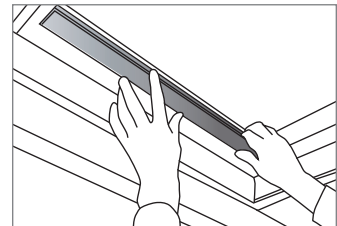
You can fit your Web-Blinds Skylight Roller blind in a few straightforward steps. Just do these in order and you'll soon have your new blind up.

Fit your Skylight Roller blind

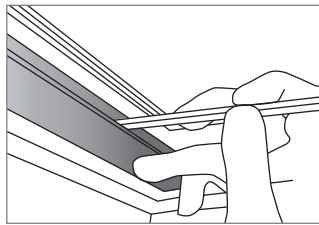
1 If your window has 2 grey tabs at each side of the frame, remove them with a flat blade screwdriver. Be careful not to damage the wood on the edge of the frame.



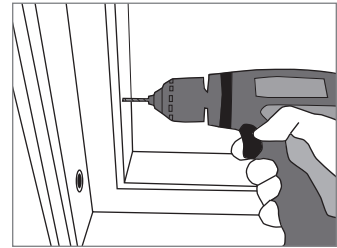
2 Position the side channels inside the window recess so they are flush with the front edge inside of the frame. Make sure the cut outs are at the top. Be aware that there is a left-hand and right-hand channel.



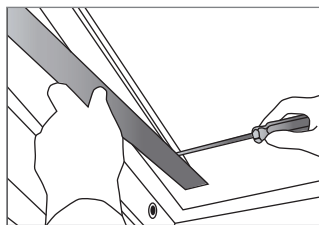
3 Mark the position of the fixing holes through the 2 slots in each side channel.



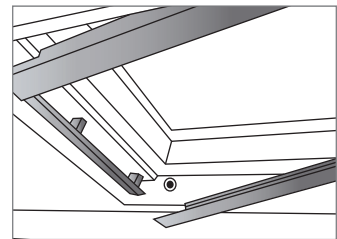
4 Remove the side channels and drill a small hole (2mm) for the fixing screws.



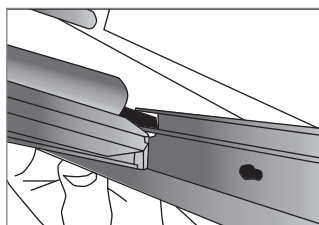
5 Position a fixing screw through the bottom slot in each side channel and tighten lightly.



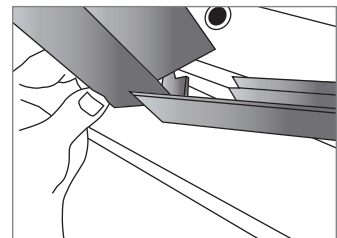
6 Once both channels are lightly tightened, carefully tilt them forward enough so you can position the assembled roller cassette.



7 Position the cassette so the black lugs sticking out fit into the narrow track on each side channel.

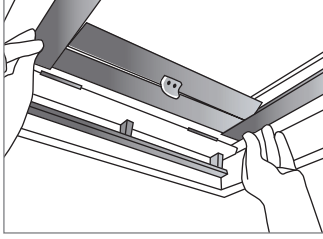


8 At the same time, make sure the brackets are engaged into the cut out at the top of each side channel.

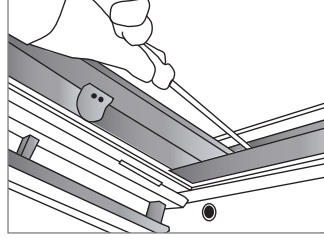


9

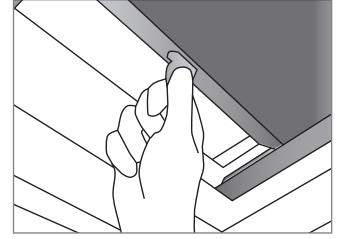
Push the assembled cassette and the side channels forward so they are flush with the front inside edge of the frame.

**10**

Position the fixing screws through the top of each side channel and secure. Tighten the screws at the bottom of each side channel.

**11**

To release the blind, tilt the finger tab forward (keep hold of the tab). To stop the blind, tilt the tab back to its original position.



Operating your blind

Operating your blind is easy. Just follow these instructions.

- Use the tab to raise and lower the blind to your desired height

Be safe

- Keep all cords and chains out of children's reach.
- Move cots, beds and other furniture away from blinds

Need help fitting your blind? Call 0845 604 9611
8.30am - 6pm, Monday to Friday and 9am -1pm Saturday